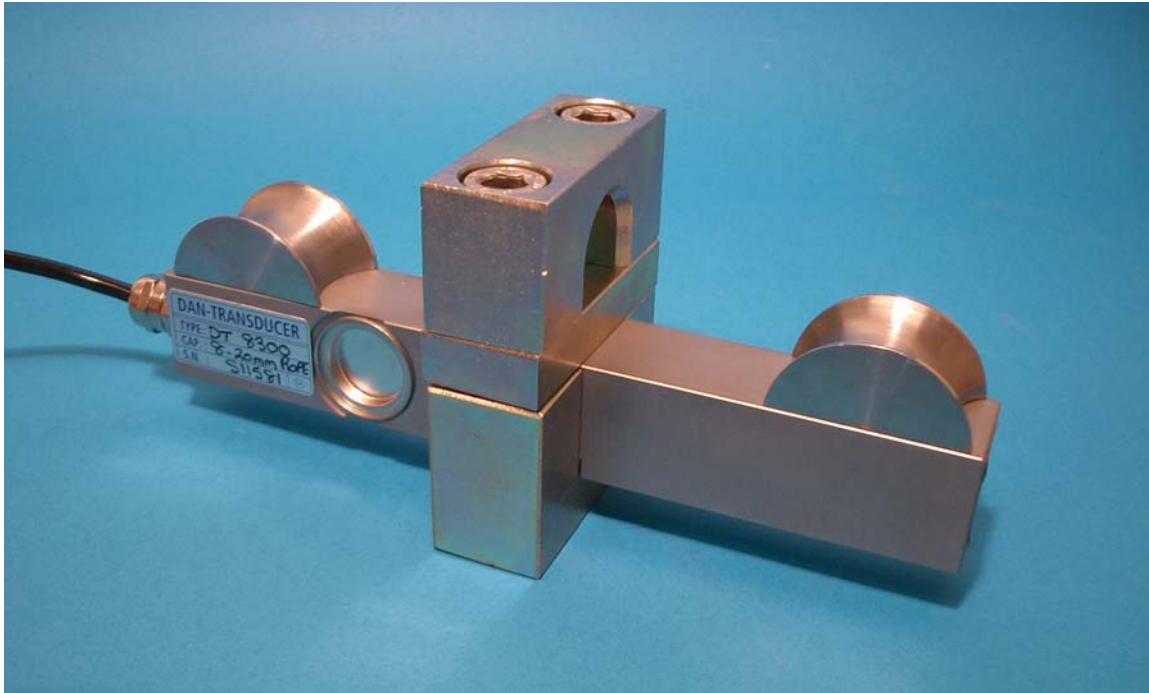


**TENSIOMETER  
CAPACITIES: 500 TO 10.000 KG**

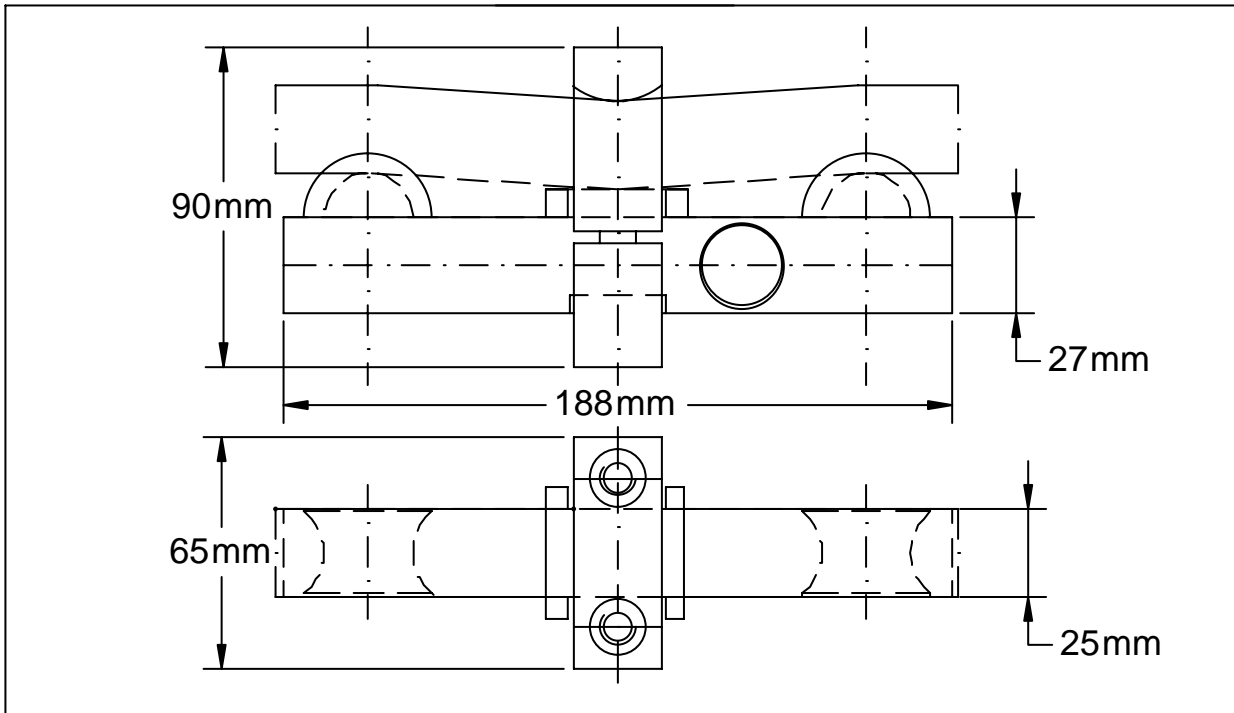
**MODEL DT 8300**



**MODEL 8300**

## **COMPLETE SERIE OF LOAD CELLS FOR ROPE CLAMP-ON**

- **FULLY WELDED STAINLESS STEEL CONSTRUCTION**
- **SEALED TO IP 68**
- **FOR USE WITH STANDARD ROPE SIZE 8-26 mm**
- **EASY TO CLAMP ON AND OFF**



## WIRE DIMENSIONS AND CAPACITIES

Wire thickness mm, standard	Tension load, + 50% In overload	Wire thickness mm, standard	Tension load, +50% in overload
8 - 10 mm	750 kg. (1075 kg)	18 - 19 mm	4000 kg (6000 kg)
11 - 13 mm	1700 kg. (2550 kg)	20 - 22 mm	5700 kg (8550 kg)
14 - 16 mm	3000 kg (4500 kg)	24 - 26 mm	7000 kg. (10500 kg)

## SPECIFICATIONS

	UNITS	AMOUNT
MAXIMUM CAPACITY, (Emax.)	Kg	SEE WIRE DIMENSIONS
Accuracy class	CLASS 4	<100 DIVISIONS
Sensitivity	MV/V	1,0 +/-1%
Service load	% of Emax.	150
Safe load limit (Elim.)	% of Emax.	300
Repeatability	%	<+/-0,5
Excitation	V	10 (12)
Temperature compensation	*C	-10 to +40
Temperature limits	*C	-30 to +70
Nominal input voltage (Max)	V	10 (15)
Output resistance	Ohm	350+/-5
Cable length	Meters	5
Insulation resistance	M ohms	>5000

## ELECTRICAL CONNECTION

CABLE	POLYURETHANE
+EXCITATION	RED
-EXCITATION	BLUE
+SIGNAL	GREEN
-SIGNAL	YELLOW