

DAN-TRANSDUCER ApS

SINGLEPOINT LOAD CELL
CAPACITIES: 75 - 400 Kg

MODEL 190



MODEL 190a

COMPLETE SERIE OF SINGLE POINT LOAD CELLS

VERSIONS

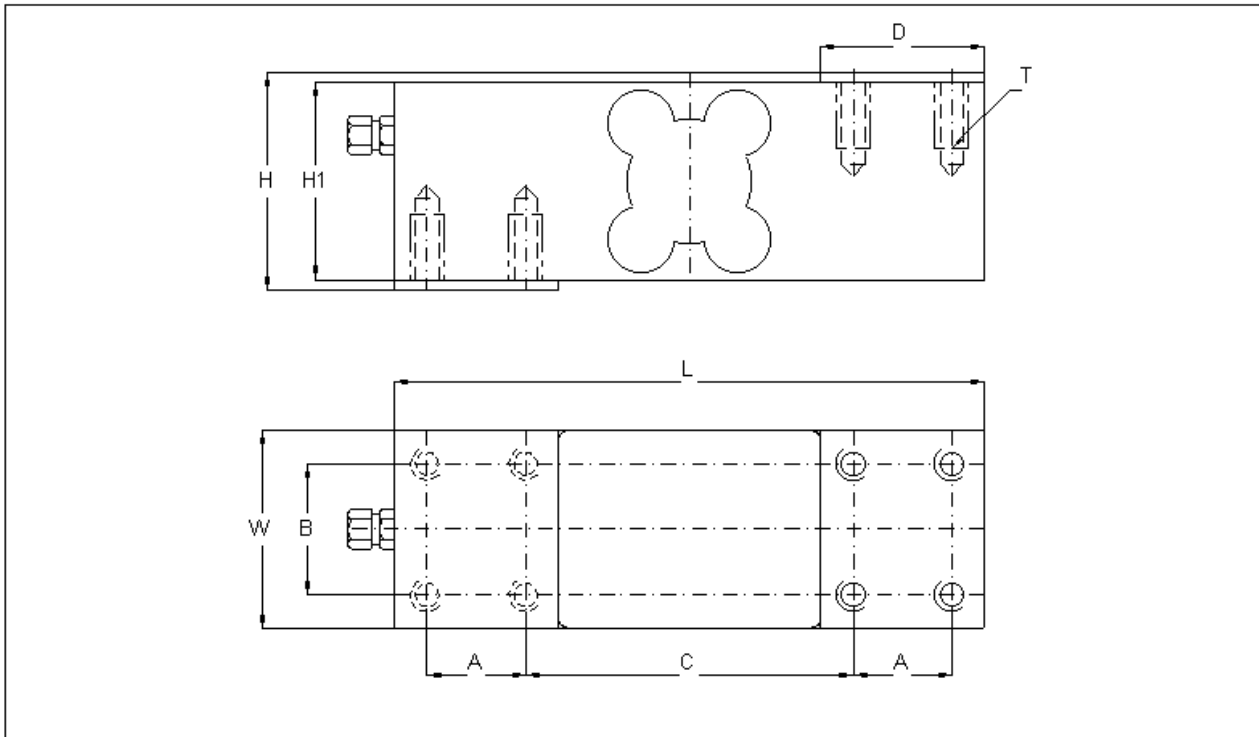
- 190 a NICKEL-PLATED STEEL ALLOY SILICONE SEALING, IP 66 (EN 60529)
- 190 i FULLY STAINLESS STEEL CONSTRUCTION HERMETICALLY SEALED, FULLY WELDED, IP 68 (EN 60529)

- DOUBLE BENDING CONSTRUCTION WITH SHEAR MEASUREMENT POINT
- 3000 DIVISIONS O.I.M.L. R60 CLASS C
- MEASURING ELEMENT OF STAINLESS STEEL ALL WELDED.
- PROTECTED AGAINST HUMIDITY UP TO 100 % (N.C.), IP 68 (EN 60529)
- SINGLE POINT LOAD CELL.; HIGH ACCURACY BY OFF-CENTER LOADS
- 4 WIRES ELECTRICAL CONNECTION, NO SENSE LEADS.
- PLATFORM SIZE SMALL UNIT: 600 X 600 mm
- PLATFORM SIZE BIG UNIT : 800 X 800 mm

DAN-TRANSDUCER ApS

Fiskerengen 5, DK-3250 Gilleleje - Phone: +45 48 22 44 02 - Fax: +45 48 22 44 06
www.dan-transducer.com, E-mail: info@dan-transducer.com

DAN-TRANSDUCER ApS



DIMENSIONS

Load kg	L	W	H	H1	A	B	C	D	T	Pl.Size	Weight
75, 120, 200, 350	150	35	56	50	17	20	96	35	8xM8x1,25x16	600x600	1,8 kg
250, 400	180	60	66	60	30	40	100	50	8xM10x1,5x20	800x800	4,3 kg

SPECIFICATIONS

	UNITS	C3
Standard load ranges	Kg	75-120-200-350; 250-400
V.min.		E _{max} /6.000
Min. dead load	%	0
Safe service load	%	150
Ultimate Load	%	200
Combined Error	%	<0,017
Repeatability	%	<0,01
Temp. Coeff. of Zero	%/°C	<0,002
Temp. Coeff. of Span	%/°C	<0,0012
Creep in 30 Minutes	%/°C	<0,016
Compensated Temp.	*C	-10 to +40
Operational Temp.	*C	-20 to +50
Full Load Output	mV/V	2,0+/-10% (+/-0,1% Option)
Excitation, dc or ac	Volt	10(max.15)
Input Resistance	Ohms	400+/-20
Output Resistance	Ohms	350+/-3
Output at Zero Load	%	<2
Insulation	M Ohms	>500 at 100V.dc
Max. deflection (at L _n)	Mm	0,3-0,5

ELECTRICAL CONNECTION

CABLE	PVC; Ø 5,4 MM; 5 METER
+ EXCITATION	GREEN
- EXCITATION	BLACK
+ SIGNAL	RED
- SIGNAL	WHITE

DAN-TRANSDUCER ApS

Fiskerengen 5, DK-3250 Gilleleje - Phone: +45 48 22 44 02 - Fax: +45 48 22 44 06
www.dan-transducer.com, E-mail: info@dan-transducer.com