

DAN-TRANSDUCER ApS

SHEAR BEAM LOAD CELL
CAPACITIES: 250 Kg to 10 TONS

MODEL DT 2250



MODEL DT 2250

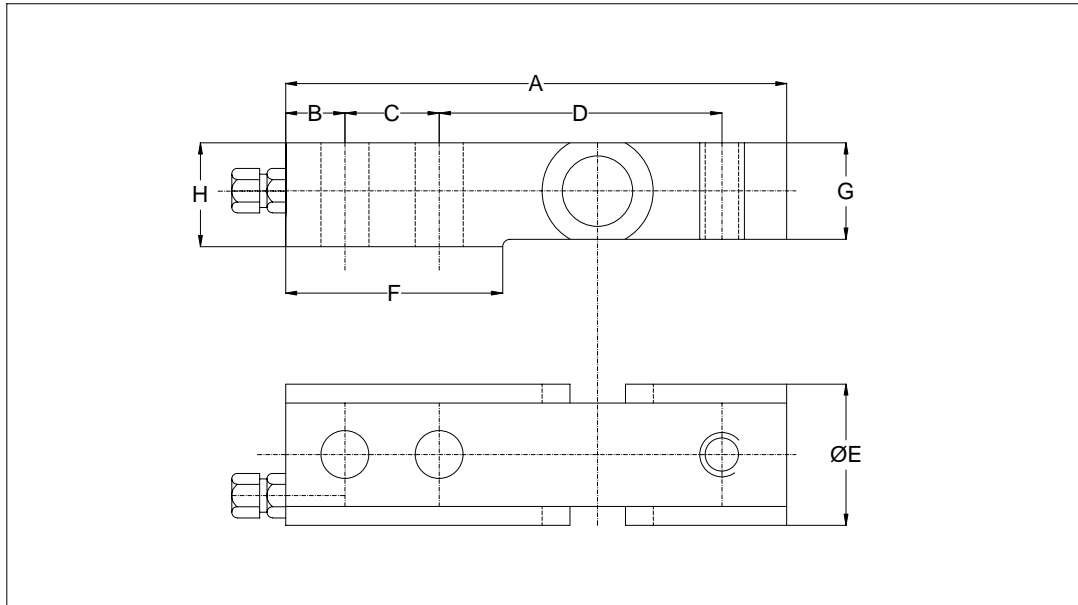
COMPLETE SERIE OF LOAD CELLS FOR PLATFORMS SCALES, TANKS AND HOPPER SCALES

- SERIE DT 2250 SHEAR BEAMS FOR MANY APPLICATIONS IN THE INDUSTRY.
- 3000 DIVISIONS O.I.M.L. R60, UNDER STANDARD CONDITIONS.
- SIMPLE TO INSTALL AND TO REPLACE BY REPAIR
- FULLY WELDED STAINLESS STEEL HERMETICALLY SEALED TO IP 68.
- CAPACITIES: 250, 500, 2000, 5000 AND 10.000 Kg
- LIGHTNING PROTECTION IS AVAILABLE

DAN-TRANSDUCER ApS

Fiskerengen 5, DK-3250 Gilleleje - Phone: +45 48 22 44 02 - Fax: +45 48 22 44 06
www.dan-transducer.com, E-mail: info@dan-transducer.com

DAN-TRANSDUCER ApS



DIMENSIONS

MODEL	RANGES KG	A	B	C	D	F	G	H	ØI	ØJ	ØE	CABLE M
2250	250 – 1.000	135	17,5	25,4	76,2	55	26	28	13	M12	38,2	4
2250	2.000	135	17,5	25,4	76,2	55	26	28	13	M16	38,2	4
2250	5.000	170	20	38,1	95,3	76	36	39	21	21	50,8	6
2250	10.000	220	26	50,8	120,7	105	46	52	26	26	68	10

SPECIFICATIONS

	UNITS	AMOUNT
	KG/T	250, 500/ 1, 2, 5, 10
<i>Capacities, (Emax.)</i>		
Accuracy class	AS, C3 at 20 C.	3000 DIVISIONS
Min. dead load (Emin.)	% of Emax.	0
Safe load limit (Elim.)	% of Emax.	200
Linearity error	%	<+/-0,020
Hysteresis error	%	<+/-0,020
Repeatability	%	<+/-0,015
Temperature effects: Zero	%/*C	<+/-0,0015
Temperature effects: Span	%/*C	<+/-0,0015
Temperature compensation	*C	-10 to +40
Temperature limits	*C	-30 to +70
Sensitivity (C)	MV/V	2+/-0,1%
Nominal input voltage (Max)	V dc or ac	10 (15)
Input resistance	Ohm	400+/-25
Output resistance	Ohm	350+/-2
No load out put	%	<+/-2
V.min.		E.max./10.000
Insulation resistance	M ohms	>5000

ELECTRICAL CONNECTION

CABLE	POLYURETHANE, Ø 5,4mm
+ EXCITATION	RED
- EXCITATION	BLUE
+ SIGNAL	GREEN
- SIGNAL	YELLOW

DAN-TRANSDUCER ApS

Fiskerengen 5, DK-3250 Gilleleje - Phone: +45 48 22 44 02 - Fax: +45 48 22 44 06
www.dan-transducer.com, E-mail: info@dan-transducer.com