

# DAN-TRANSDUCER ApS

DOUBLE BENDING LOAD CELL  
CAPACITIES: 10 - 300 Kg.

MODEL 300



MODEL 300i

## COMPLETE SERIE OF LOAD CELLS

### VERSIONS

300 a      NICKEL-PLATED BODY AND STAINLESS STEEL BELLOW

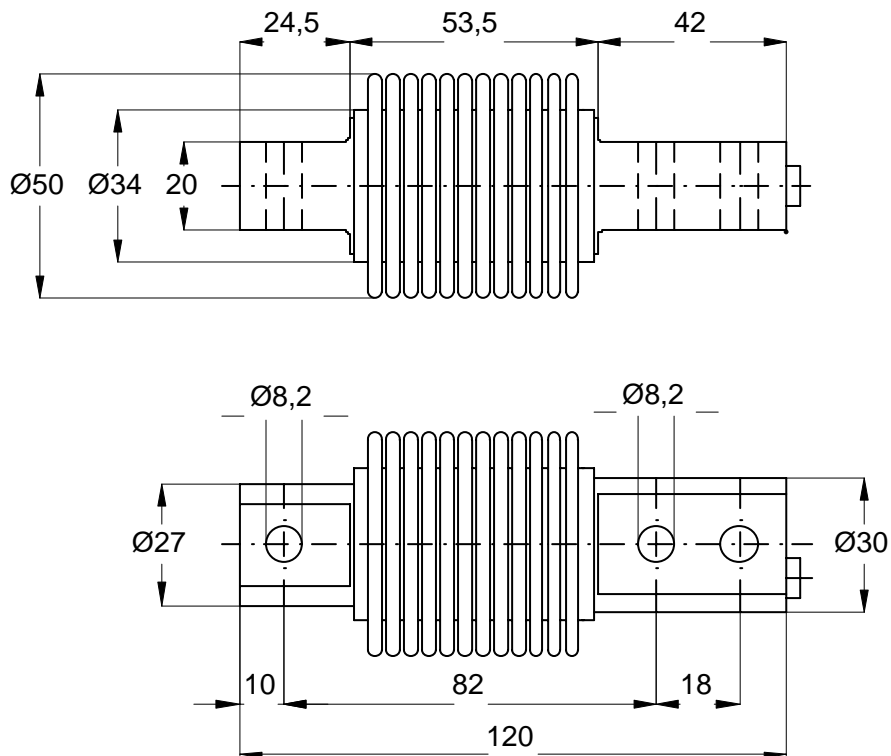
300 i      FULLY STAINLESS STEEL

- DOUBLE BENDING LOAD CELL
- 3000 DIVISIONS O.I.M.L. R60 CLASS C
- SIMPLE TO INSTALL
- FULLY WELDED STAINLESS STEEL CONSTRUCTION
- HERMETICALLY WELDED, PROTECTION CLASS IP 68, ( EN 60529)
- STANDARD MOUNTING DIMENSIONS
- EASY TO INSTALL IN PLATFORMS, HOPPERS, TANKS ECT.
- THEY ARE ALSO AVAILABLE IN HIGHER CAPACITIES

## DAN-TRANSDUCER ApS

Fiskerengen 5, DK-3250 Gilleleje - Phone: +45 48 22 44 02 - Fax: +45 48 22 44 06  
[www.dan-transducer.com](http://www.dan-transducer.com), E-mail: [info@dan-transducer.com](mailto:info@dan-transducer.com)

# DAN-TRANSDUCER ApS



## SPECIFICATIONS

|                           | UNITS  | C3                                 |
|---------------------------|--------|------------------------------------|
| Standard load ranges      | Kg     | 10-20-30-50-75-100-150-200-250-300 |
| V. min.                   |        | E <sub>max</sub> /7.500            |
| Min. dead load            | %      | 0                                  |
| Safe service load         | %      | 150                                |
| Ultimate Load             | %      | 200                                |
| Combined Error            | %      | <0,017                             |
| Repeatability             | %      | <0,015                             |
| Temp. Coeff. of Zero      | %/°C   | <0,002                             |
| Temp. Coeff. of Span      | %/°C   | <0,0015                            |
| Creep in 30 Minutes       | %/°C   | <0,016                             |
| Compensated Temp.         | °C     | -10 to +40                         |
| Operational Temp.         | °C     | -20 to +60                         |
| Full Load Output          | mV/V   | 2,0 +/- 0,1%                       |
| Excitation, dc or ac      | Volt   | 10( max.15)                        |
| Input Resistance          | Ohms   | 400 +/- 20                         |
| Output Resistance         | Ohms   | 350+/-3                            |
| Output at Zero Load       | %      | <2                                 |
| Insulation                | M Ohms | >5000                              |
| Protection and deflection |        | IP 68 and < 0,4 mm                 |

## ELECTRICAL CONNECTION

| CABLE       | PVC, Ø4mm;3 meter |
|-------------|-------------------|
| +EXCITATION | GREEN             |
| -EXCITATION | BLACK             |
| +SIGNAL     | RED               |
| -SIGNAL     | WHITE             |

## DAN-TRANSDUCER ApS

Fiskerengen 5, DK-3250 Gilleleje - Phone: +45 48 22 44 02 - Fax: +45 48 22 44 06  
[www.dan-transducer.com](http://www.dan-transducer.com), E-mail: [info@dan-transducer.com](mailto:info@dan-transducer.com)