

DAN-TRANSDUCER ApS

DOUBLE SHEAR PIN LOAD CELL
STANDARD CAPACITIES: 2.000 KG TO 20.000 KG

MODEL DT 1701



MODEL DT 1701

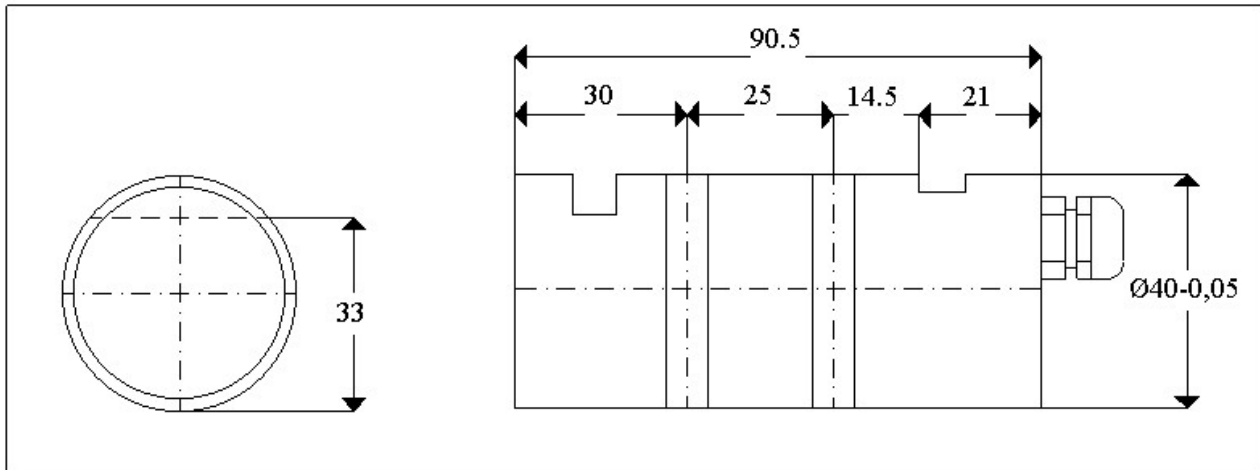
COMPLETE SERIE OF DOUBLE SHEAR PINS

- **STAINLESS STEEL**
- **MANY DIFFERENT CABLE AND CONNECTOR OPTIONS**
- **SEALED TO IP 67**
- **DESIGNED FOR DIRECT REPLACEMENTS FOR CLEVIS OR PIVOT PINS**
- **LOAD PINS ARE TYPICALLY USED IN ROPE, CHAIN AND BRAKE ANCHORES, SHEAVES, SHACKLES, BEARINGBLOCKS AND PIVOTS.**

DAN-TRANSDUCER ApS

Fiskerengen 5, DK-3250 Gilleleje - Phone: +45 48 22 44 02 - Fax: +45 48 22 44 06
www.dan-transducer.com, E-mail: info@dan-transducer.com

DAN-TRANSDUCER ApS



SPECIFICATIONS

	UNITS	AMOUNT
Standard load ranges	kg	2000 to 20.000
Full Load Output	mV/V	2,0+/-0,1%
Excitation, dc or ac	Volt	10(12)
Safe service load	%	200
Ultimate Load	%	400
Combined Error	%	<0,1
Repeatability	%	<0,03
Output at Zero Load	%	<2
Input Resistance	Ohms	700+/-20
Output Resistance	Ohms	700+/-5
Operational Temp.	*C	-20 to +80
Compensated Temp.	*C	-10 to +40
Temp. Coeff. of Zero	%/°C	<0,003
Temp. Coeff. of Span	%/°C	<0,002
Creep in 4 hours	%	<0,025
Insulation	M Ohms	>500 at 100V.dc
Cable Length – Polyurethane	M	6

ELECTRICAL CONNECTION

CABLE	POLYURETHANE; Ø5,5 mm; 4 meter
+ EXCITATION	RED
- EXCITATION	BLUE
+ SIGNAL	GREEN
- SIGNAL	YELLOW

DAN-TRANSDUCER ApS

Fiskerengen 5, DK-3250 Gilleleje - Phone: +45 48 22 44 02 - Fax: +45 48 22 44 06
www.dan-transducer.com, E-mail: info@dan-transducer.com