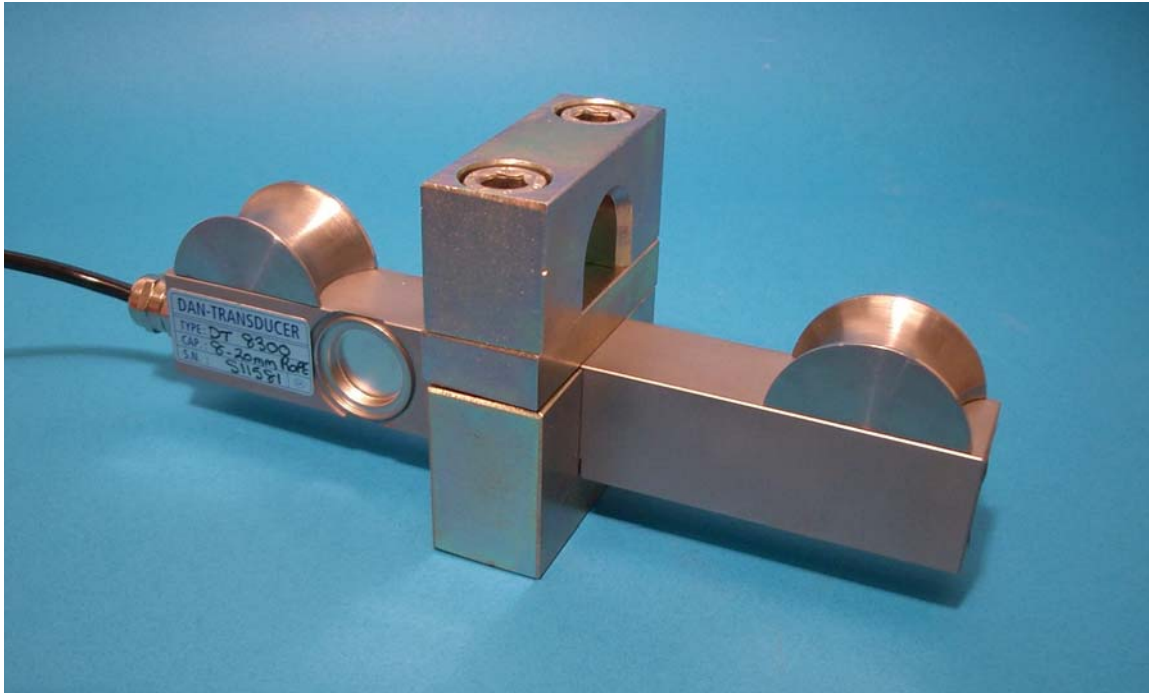


DAN-TRANSDUCER ApS

TENSIOMETER
CAPACITIES: 500 TO 10.000 KG

MODEL DT 8300



MODEL 8300

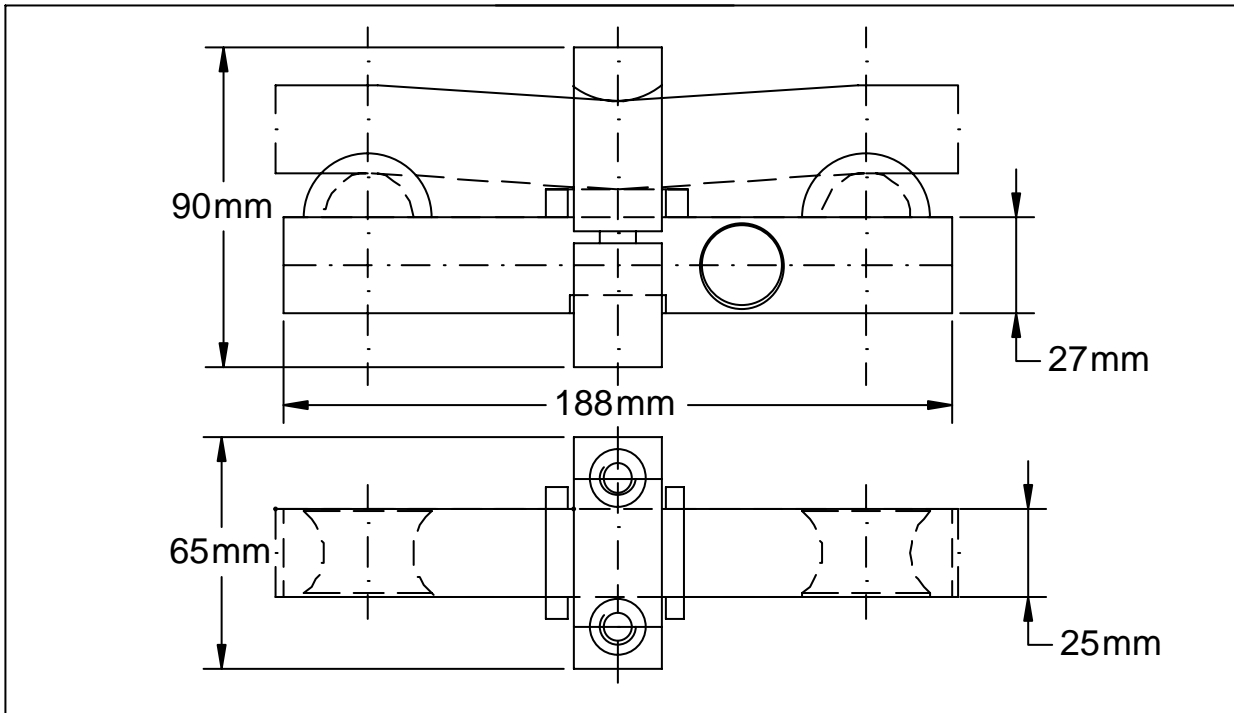
COMPLETE SERIE OF LOAD CELLS FOR ROPE CLAMP-ON

- FULLY WELDED STAINLESS STEEL CONSTRUCTION
- SEALED TO IP 68
- FOR USE WITH STANDARD ROPE SIZE 8-26 mm
- EASY TO CLAMP ON AND OFF

DAN-TRANSDUCER ApS

Fiskerengen 5, DK-3250 Gilleleje - Phone: +45 48 22 44 02 - Fax: +45 48 22 44 06
www.dan-transducer.com, E-mail: info@dan-transducer.com

DAN-TRANSDUCER ApS



WIRE DIMENSIONS AND CAPACITIES

Wire thickness mm, standard	Tension load, + 50% In overload	Wire thickness mm, standard	Tension load, +50% in overload
8 - 10 mm	750 kg. (1075 kg)	18 - 19 mm	4000 kg (6000 kg)
11 - 13 mm	1700 kg. (2550 kg)	20 - 22 mm	5700 kg (8550 kg)
14 - 16 mm	3000 kg (4500 kg)	24 - 26 mm	7000 kg. (10500 kg)

SPECIFICATIONS

	UNITS	AMOUNT
MAXIMUM CAPACITY, (E _{max} .)	Kg	SEE WIRE DIMENSIONS
Accuracy class	CLASS 4	<100 DIVISIONS
Sensitivity	MV/V	1,0 +/-1%
Service load	% of E _{max} .	150
Safe load limit (Elim.)	% of E _{max} .	300
Repeatability	%	<+/-0,5
Excitation	V	10 (12)
Temperature compensation	*C	-10 to +40
Temperature limits	*C	-30 to +70
Nominal input voltage (Max)	V	10 (15)
Output resistance	Ohm	350+/-5
Cable length	Meters	5
Insulation resistance	M ohms	>5000

ELECTRICAL CONNECTION

CABLE	POLYURETHANE
+EXCITATION	RED
-EXCITATION	BLUE
+SIGNAL	GREEN
-SIGNAL	YELLOW

DAN-TRANSDUCER ApS

Fiskerengen 5, DK-3250 Gilleleje - Phone: +45 48 22 44 02 - Fax: +45 48 22 44 06
www.dan-transducer.com, E-mail: info@dan-transducer.com