

DAN-TRANSDUCER ApS

COMPRESSION LOAD CELL
STANDARD CAPACITIES: 2 TONS TO 20 TONS

MODEL DT 101



MODEL DT 101

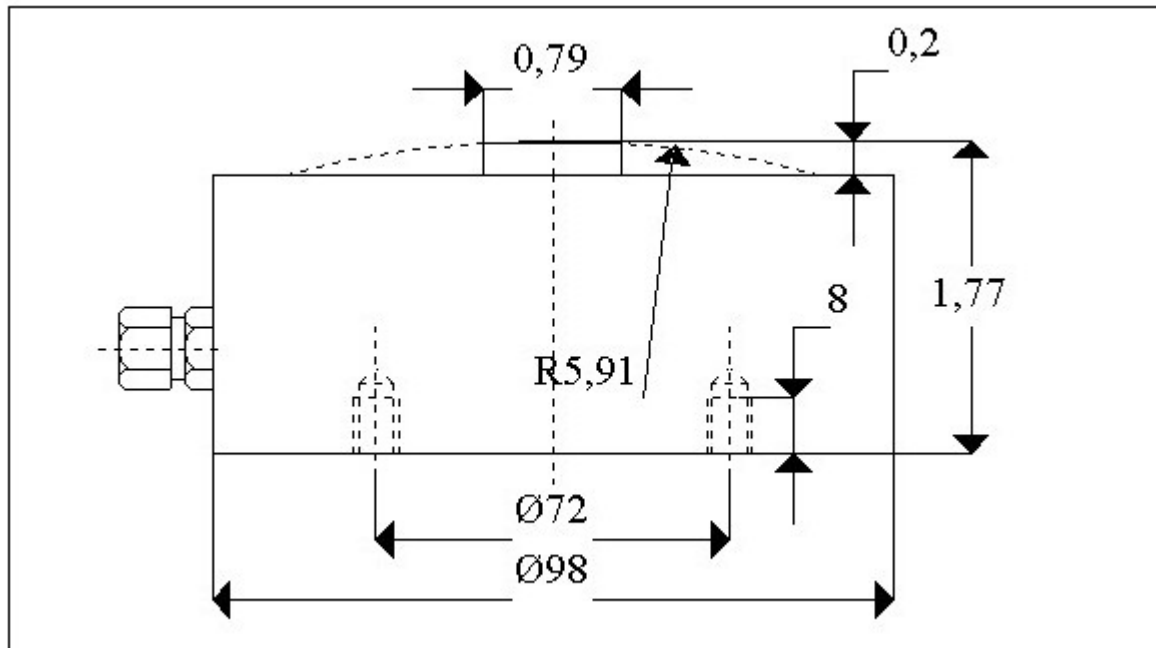
COMPLETE SERIE OF LOAD CELLS FOR SILOS, TANKS AND HOPPER SCALES

- SERIE DT 101 COMPRESSION LOAD CELLS FOR MANY APPLICATIONS.
- BETTER THAN 1500 DIVISIONS UNDER STANDARD CONDITIONS.
- SIMPLE TO INSTALL AND TO REPLACE BY REPAIR
- FULLY WELDED STAINLESS STEEL, HERMETICALLY SEALED TO IP 68.
- CAPACITIES: 2.000, 5.000, 10.000 AND 20.000Kg
- LOW COST LOAD CELL AND INSTALLATION

DAN-TRANSDUCER ApS

Thorsvang 11, DK-300 Hillerød - Phone: +45 48 22 44 02 - Fax: +45 48 22 44 06
www.dan-transducer.com, E-mail: info@dan-transducer.com

DAN-TRANSDUCER ApS



SPECIFICATIONS

	UNITS	AMOUNT
Capacities, E_{MAX}	T	2,5,10,20
Accuracy class	>As C1,5	>1500 DIVISIONS
Min. dead load E_{min}	% of E_{MAX}	0
Safe Load limit E_{LIM}	% of E_{MAX}	150
Linearity error	%	<+/-0,10
Hysteresis error	%	<+/-0,10
Repeatability	%	<+/-0,05
Temperature effects: zero	%/°C	<+/-0,005
Temperature effects: span	%/°C	<+/-0,005
Creep error	%	<+/-0,020
Temperature compensation	°C	-30 to +70
Sensitivity (C)	MV/V	2+/-0,25%
Nominal input voltage (max)	V dc or ac	10 (15)
Input resistance	Ohm	780+/-25
Output resistance	Ohm	700+/-5
No load out put	%	<+/-2
Insulation resistance	M ohms	>5000

ELECTRICAL CONNECTION

CABLE	POLYURETHANE, Ø5,4 mm; 7 meter
+ EXCITATION	RED
- EXCITATION	BLUE
+ SIGNAL	GREEN
- SIGNAL	YELLOW

DAN-TRANSDUCER ApS

Thorsvang 11, DK-300 Hillerød - Phone: +45 48 22 44 02 - Fax: +45 48 22 44 06
www.dan-transducer.com, E-mail: info@dan-transducer.com