

DAN-TRANSDUCER ApS

LOAD LINK MODEL DT 8290

STANDARD CAPACITIES: From 1 Tons to 500 Tons



MODEL DT 8290

COMPLETE SERIE OF LOAD LINKS

- SERIE DT 8290 LOAD LINKS FOR MANY APPLICATIONS.
- FORE USE WITH STANDARD SHACKLE.
- ROBUST CONSTRUCTION
- LOW WEIGHT.
- CAPACITIES: 1.000 KG TO 500.000 KG
- SEALED TO IP66
- INTEGRAL ELECTRICAL CONNECTOR

Options:

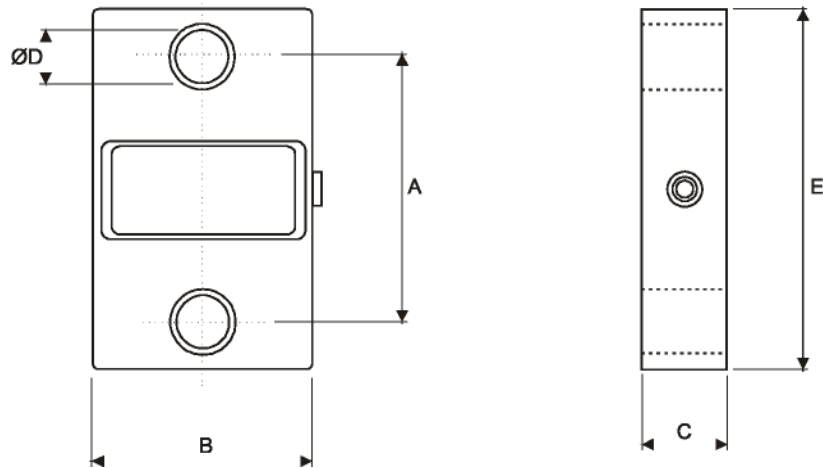
Other ranges available on request. Rechargeable battery powered handheld indicator, connected by cable.

Carry case for transportation and storage of link and handheld.

DAN-TRANSDUCER ApS

Fiskerengen 5, DK-3250 Gilleleje - Phone: +45 48 22 44 02 - Fax: +45 48 22 44 06
www.dan-transducer.com, E-mail: info@dan-transducer.com

DAN-TRANSDUCER ApS



Type	A	B	C	D	E	WEIGHT (kg)
1, 2, 5 te	108	105	40	30	164	1.4
12 te	120	105	40	38	210	1.9
25 te	131	125	55	53	255	4
35 te	147	135	55	60	305	5
50 te	170	150	75	73	345	9
100 te	228	220	123	100	455	27
250 te	330	304	189	145	680	87
500 te	451	500	200	200	1015	225

SPECIFICATIONS

	UNITS	AMOUNT
Capacities, E_{MAX}	T	1,2,5,12,25,35,50,100,250,500
Full load output	mV/V	1.5 ($\pm 0,25\%$)
Zero load output	%	< ± 2.0
Excitation (Max)	V	10 (15)
Accuracy	%	<0.1
Repeatability	%	< $\pm 0,05$
Input Resistance	Ω	700 (± 20)
Output Resistance	Ω	700 (± 2)
Compensated Temp. Range	$^{\circ}\text{C}$	0 to +60
Operating Temp. Range	$^{\circ}\text{C}$	-10 to +80
Temp. Coefficient on Zero	% Capacity/ $^{\circ}\text{C}$	<0.0010
Temp. Coefficient on Span	% Capacity/ $^{\circ}\text{C}$	<0.0010
Safe Overload	%	150
Insulation	M Ω	>500
Environmental Protection		IP66

ELECTRICAL CONNECTION

CABLE	POLYURETHANE, $\varnothing 5,4$ mm
+ EXCITATION	RED
- EXCITATION	BLUE
+ SIGNAL	GREEN
- SIGNAL	YELLOW

DAN-TRANSDUCER ApS

Fiskerengen 5, DK-3250 Gilleleje - Phone: +45 48 22 44 02 - Fax: +45 48 22 44 06
www.dan-transducer.com, E-mail: info@dan-transducer.com