

# DAN-TRANSDUCER ApS

LOAD LINK MODEL DT 8292  
STANDARD CAPACITIES:  
From 1 Tons to 500 Tons



MODEL DT 8292

## COMPLETE SERIE OF LOAD LINKS

- SERIE DT 8292 LOAD LINKS FOR MANY APPLICATIONS.
- FORE USE WITH STANDARD SHACKLE.
- AUTO POWER DOWN.
- RANGE 200M
- CAPACITIES: 1.000 KG TO 500.000 KG
- SEALED TO IP67
- UP TO 255 LINKS CAN BE USED IN ONE INSTALLATION

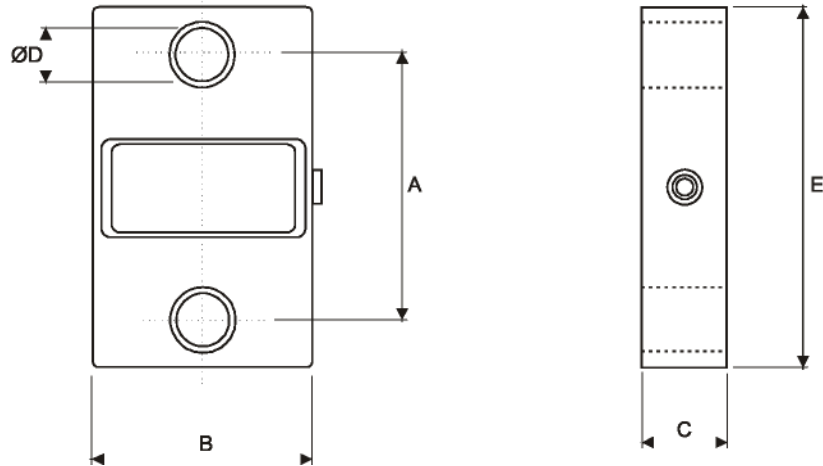
### Options:

Other ranges available on request. Wireless Handheld unit.  
Carry case for transportation and storage of link and handheld.

## DAN-TRANSDUCER ApS

Fiskerengen 5, DK-3250 Gilleleje - Phone: +45 48 22 44 02 - Fax: +45 48 22 44 06  
[www.dan-transducer.com](http://www.dan-transducer.com), E-mail: [info@dan-transducer.com](mailto:info@dan-transducer.com)

# DAN-TRANSDUCER ApS



Type	A	B	C	D	E	WEIGHT (kg)
1, 2, 5 te	108	105	40	30	164	1.4
12 te	120	105	40	38	210	1.9
25 te	131	125	55	53	255	4
35 te	147	135	55	60	305	5
50 te	170	150	75	73	345	9
100 te	228	220	123	100	455	27
250 te	330	304	189	145	680	87
500 te	451	500	200	200	1015	225

## SPECIFICATIONS

	UNITS	AMOUNT
Capacities, E <sub>MAX</sub>	T	1,2,5,12,25,35,50,100,250,500
Full load output	mV/V	1.5 ( ±0,25%)
Zero load output	%	<±2.0
Excitation (Max)	V	10 (15)
Accuracy	%	<0.1
Repeatability	%	<±0,05
Battery Life	Hrs	150 (Lithium)
Auto Power Down	Hrs	9
Compensated Temp. Range	°C	0 to +60
Operating Temp. Range	°C	-10 to +80
Temp. Coefficient on Zero	% Capacity/°C	<0.0010
Temp. Coefficient on Span	% Capacity/°C	<0.0010
Safe Overload	%	150
Insulation	MΩ	>500
Environmental Protection		IP66

## ELECTRICAL CONNECTION

CABLE	POLYURETHANE, Ø5,4 mm
+ EXCITATION	RED
- EXCITATION	BLUE
+ SIGNAL	GREEN
- SIGNAL	YELLOW

## DAN-TRANSDUCER ApS

Fiskerengen 5, DK-3250 Gilleleje - Phone: +45 48 22 44 02 - Fax: +45 48 22 44 06  
[www.dan-transducer.com](http://www.dan-transducer.com), E-mail: [info@dan-transducer.com](mailto:info@dan-transducer.com)